



India Meteorological Department
Earth System Science Organisation
(Ministry of Earth Sciences)

BULLETIN NO.: 42 (BAY OF BENGAL 01/2020)

TIME OF ISSUE: 1145 HOURS IST

DATED: 21.05.2020

FROM: INDIA METEOROLOGICAL DEPARTMENT (FAX NO. 24643965/24699216/24623220)

TO: CONTROL ROOM, NDM, MINISTRY OF HOME AFFAIRS (FAX.NO. 23093750)

CONTROL ROOM NDMA (FAX.NO. 26701729)

CABINET SECRETARIAT (FAX.NO.23012284, 23018638)

PS TO HON'BLE MINISTER FOR S & T AND EARTH SCIENCES (FAX NO.23316745)

SECRETARY, MOES, (FAX NO. 24629777)

H.Q. (INTEGRATED DEFENCE STAFF AND CDS) (FAX NO. 23005137/23005147)

DIRECTOR GENERAL, DOORDARSHAN (23385843)

DIRECTOR GENERAL, AIR (23421105, 23421219)

PIB MOES (FAX NO. 23389042)

UNI (FAX NO. 23355841)

D.G. NATIONAL DISASTER RESPONSE FORCE (NDRF) (FAX NO. 26105912, 2436 3260)

DIRECTOR, PUNCTUALITY, INDIAN RAILWAYS (FAX NO. 23388503)

CHIEF SECRETARY, WEST BENGAL (FAX NO. 033-22144328)

CHIEF SECRETARY, GOVT. OF ODISHA (FAX NO. 0674 -2536660)

CHIEF SECRETARY, GOVT. OF ASSAM (FAX NO. 0361-2237200)

CHIEF SECRETARY, GOVT. OF MEGHALAYA (FAX NO. 0364 - 2225978)

CHIEF SECRETARY, GOVT. OF SIKKIM (FAX NO. 03592 -204323)

Sub: Super Cyclonic Storm 'AMPHAN' (pronounced as UM-PUN) lay as a Cyclonic Storm over Bangladesh

The Super Cyclonic Storm 'AMPHAN' (pronounced as **UM-PUN**) moved north-northeastwards with a speed of 10 kmph during past 06 hours as a **Cyclonic Storm** and lay centered at 0830 hrs IST of today, the 21st May 2020 over **Bangladesh** near Lat. 24.7°N and Long. 89.5°E about 270 km north-northeast of Kolkata, 150 km south of Dhubri and 110 km south-southeast of Rangpur (Bangladesh).

It is very likely to continue to move north-northeastwards and weaken further into a Deep Depression during next 03 hours and into a Depression during subsequent 06 hours.

Forecast track and intensity are given in the following table:

Date/Time(IST)	Position (Lat. °N/ long. °E)	Maximum sustained surface wind speed (Kmph)	Category of cyclonic disturbance
21.05.20/0830	24.7/89.5	60-70 gusting to 80	Cyclonic Storm
21.05.20/1130	25.3/89.8	50-60 gusting to 70	Deep Depression
21.05.20/1730	26.5/90.5	30-40 gusting to 50	Depression

(1) Heavy rainfall Warning:

Assam & Meghalaya: Light to moderate rainfall at most places with heavy to very heavy & **extremely heavy falls (≥ 20 cm)** at isolated places very likely on 21st May, 2020.

Arunachal Pradesh: Light to moderate rainfall at most places with heavy to very heavy falls at isolated places very likely on 21st May, 2020.

(2) Wind warning

Squally wind speed reaching 50 to 60 kmph gusting to 70 kmph very likely over Western Assam & Western Meghalaya till evening and reduce gradually thereafter.

Kindly visit www.rsmcnewdelhi.imd.gov.in and www.mausam.imd.gov.in for updates on the system.

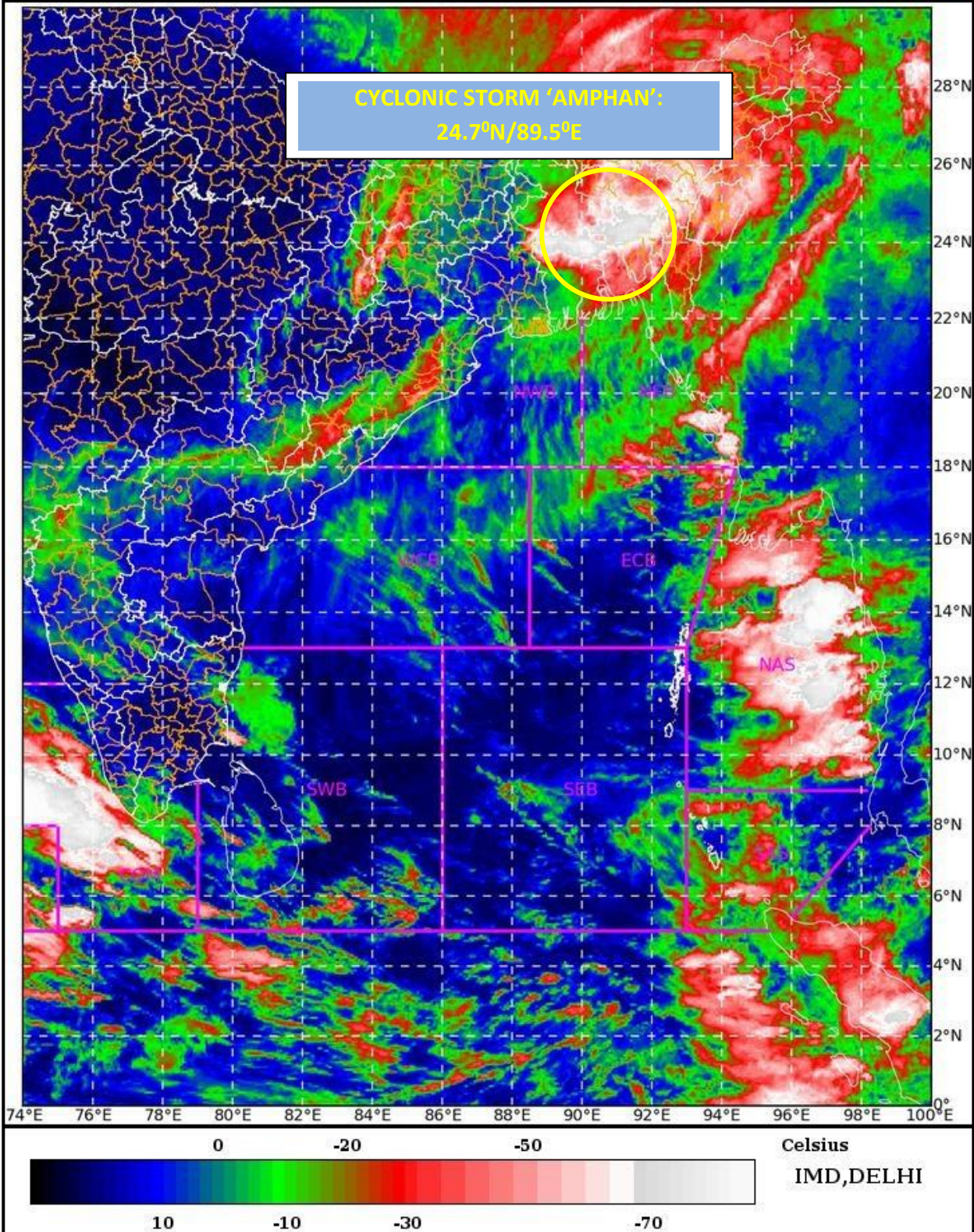
Next Bulletin will be issued at 1430 hours IST of today, the 21st May, 2020.

(Sunitha Devi S)
Scientist-E, RSMC, New Delhi

Copy to: RMC Guwahati/ ACWC Kolkata

Spatial rainfall distribution: Isolated: <25%, A few: 26-50%, Many: 51-75%, Most: 76-100%
Rainfall amount (mm): Heavy rain: 64.5 – 115.5, Very heavy rain: 115.6 – 204.4, Extremely heavy rain: 204.5 or more.

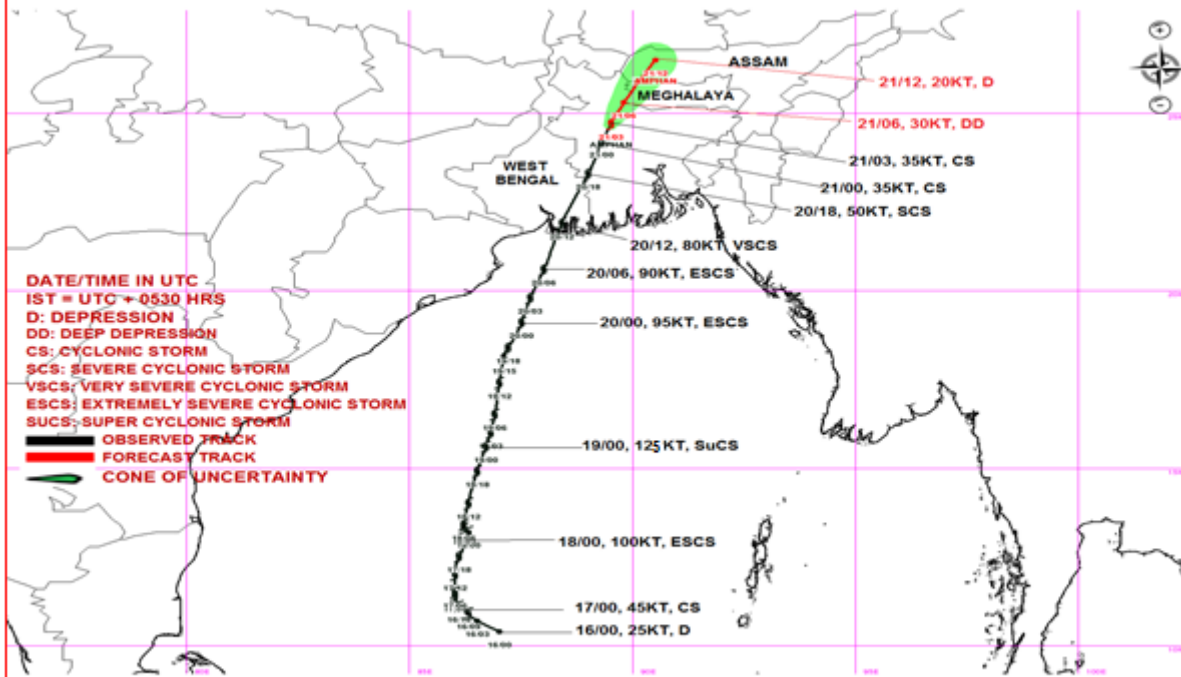
SAT : INSAT-3D IMG 21-05-2020/(0030 to 0056) GMT
 IMG_TIR1_TEMP 10.8 um 21-05-2020/(0600 to 0626) IST
 L1C Mercator



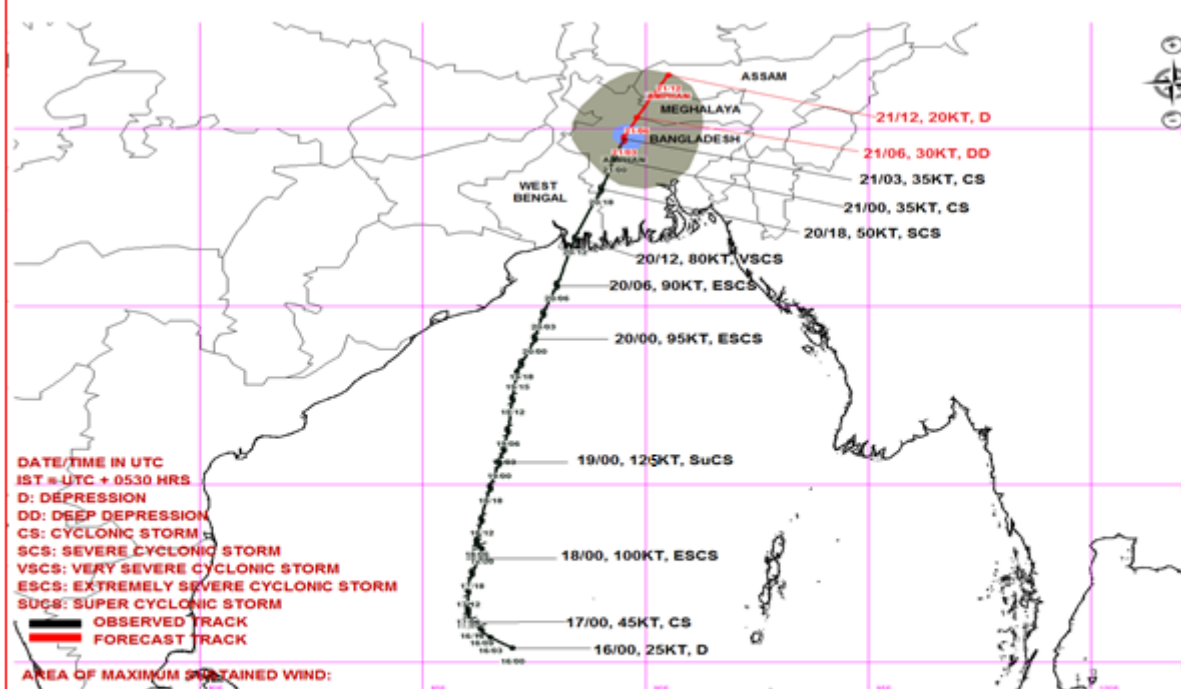
Legend: WCB – Westcentral Bay of Bengal
 NWB – Northwest Bay of Bengal

Spatial rainfall distribution: Isolated: <25%, A few: 26-50%, Many: 51-75%, Most: 76-100%
 Rainfall amount (mm): Heavy rain: 64.5 – 115.5, Very heavy rain: 115.6 – 204.4, Extremely heavy rain: 204.5 or more.

OBSERVED & FOECAST TRACK OF SUPER CYCLONIC STORM 'AMPHAN' BASED ON 0300 UTC OF 21ST MAY, 2020



OBSERVED & FORECAST TRACK AND WIND DISTRIBUTION OF SUPER CYCLONIC STORM 'AMPHAN' BASED ON 0300 UTC OF 21ST MAY, 2020



MSW(knot)/kmph)	Impact	Action
28-33 /(52-61)	Very rough seas.	Total suspension of fishing operations
34-40/(62-74)	High to very high seas	Total suspension of fishing operations

Spatial rainfall distribution: Isolated: <25%, A few: 26-50%, Many: 51-75%, Most: 76-100%
 Rainfall amount (mm): Heavy rain: 64.5 – 115.5, Very heavy rain: 115.6 – 204.4, Extremely heavy rain: 204.5 or more.